



THE WAGTAIL

4 bedroom home

Open Plan Kitchen and dining room

Ground floor study

Separate Sitting Room

Three well-proportioned bedrooms

Ensuite to Bedroom 1


Bovis Homes
Est. 1885

THE WAGTAIL

4 bedroom home



GROUND FLOOR	METRES	FEET/INCHES
Kitchen / dining room	5.21 x 5.02m	17'1" x 16'5"
Study	2.79 x 2.03m	9'2" x 6'7"

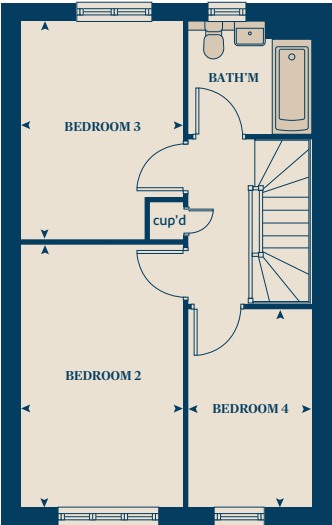
FIRST FLOOR	METRES	FEET/INCHES
Living room	5.20 x 3.55m	17'1" x 11'6"
Bedroom 1	5.04 x 2.82m	16'5" x 9'3"

SECOND FLOOR	METRES	FEET/INCHES
Bedroom 2	4.72 x 2.92m	15'5" x 9'6"
Bedroom 3	3.88 x 2.92m	12'7" x 9'6"
Bedroom 4	3.55 x 2.20m	11'6" x 7'2"

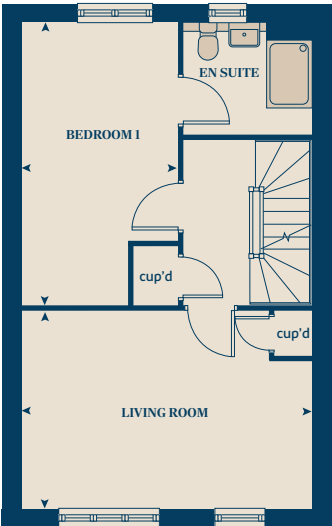
< >	measuring points	ffzs	fridge freezer space
ws	washing machine space	ds	dishwasher space
h	hob	cup'd	cupboard
ovn	oven	b	boiler

The Wagtail | 4 bedroom home
The floorplan has been produced for illustrative purposes only. Room sizes shown are between arrow points as indicated on plan. The dimensions have tolerances of + or -50mm and should not be used other than for general guidance. If specific dimensions are required, enquiries should be made to the sales consultant. The floor plans shown are not to scale. Measurements are based on the original drawings. Slight variations may occur during construction. The illustrations shown are computer generated impressions of how the property may look and are indicative only. External details or finishes may vary on individual plots and homes may be built in either detached or attached styles depending on the development layout. Exact specifications, window styles and whether a property is left or right-handed may differ from plot to plot. Please speak to our sales consultant for specific plot details.

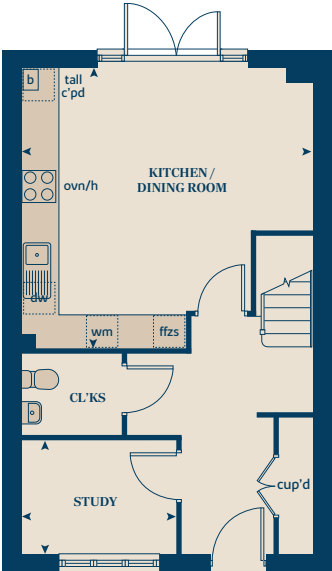
SECOND FLOOR



FIRST FLOOR



GROUND FLOOR





THE EIDER

3 bedroom home

Open plan kitchen and dining room

Utility room

Separate sitting room

Four well proportioned bedrooms

Modern family bathroom


Bovis Homes
Est. 1885

THE EIDER

3 bedroom home



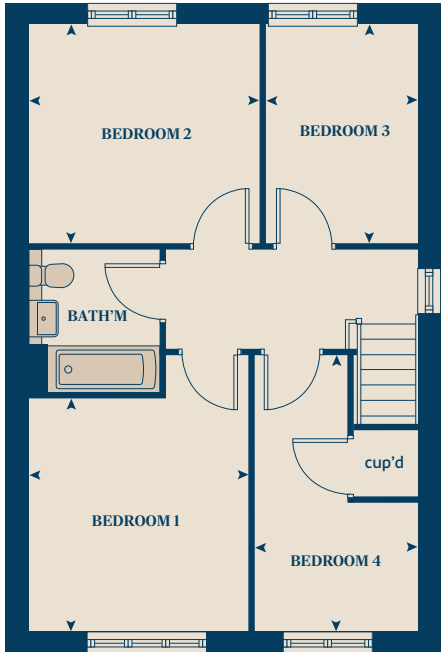
GROUND FLOOR	METRES	FEET/INCHES
Kitchen / dining room	5.90 x 3.83m	19'4" x 12'7"
Living room	3.77 x 3.64m	12'4" x 11'9"

FIRST FLOOR	METRES	FEET/INCHES
Bedroom 1	4.15 x 3.34m	13'6" x 10'10"
Bedroom 2	3.51 x 3.30m	11'5" x 10'8"
Bedroom 3	2.30 x 3.30m	7'5" x 10'8"
Bedroom 4	4.15 x 2.46m	13'6" x 10'8"

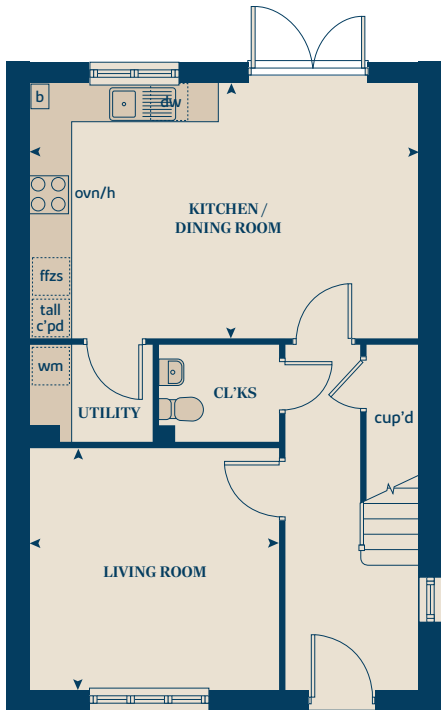
< >	measuring points	ffzs	fridge freezer space
ws	washing machine space	ds	dishwasher space
h	hob	cup'd	cupboard
ovn	oven	b	boiler

The Eider | 3 bedroom home
The floorplan has been produced for illustrative purposes only.
Room sizes shown are between arrow points as indicated on plan.
The dimensions have tolerances of + or -50mm and should not be used other than for general guidance. If specific dimensions are required, enquiries should be made to the sales consultant. The floor plans shown are not to scale. Measurements are based on the original drawings. Slight variations may occur during construction. The illustrations shown are computer generated impressions of how the property may look and are indicative only. External details or finishes may vary on individual plots and homes may be built in either detached or attached styles depending on the development layout. Exact specifications, window styles and whether a property is left or right-handed may differ from plot to plot. Please speak to our sales consultant for specific plot details.

FIRST FLOOR



GROUND FLOOR





THE PEREGRINE

3 bedroom home

Open plan kitchen and dining room

Ground floor study

Separate sitting room

Modern living across three floors

Ensuite to bedroom 1


Bovis Homes
Est. 1885

THE PEREGRINE

3 bedroom home



GROUND FLOOR	METRES	FEET/INCHES
Kitchen / dining room	4.50 x 3.36m	14'8" x 11'0"
Study	2.31 x 2.27m	7'6" x 7'4"

FIRST FLOOR	METRES	FEET/INCHES
Living room	4.36 x 2.96m	14'3" x 9'7"
Bedroom 3	4.36 x 3.16m	14'3" x 10'4"

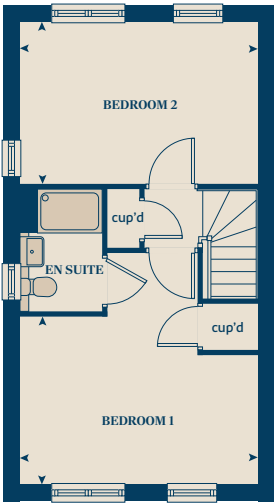
SECOND FLOOR	METRES	FEET/INCHES
Bedroom 1	4.36 x 2.96m	14'3" x 9'7"
Bedroom 2	4.36 x 2.96m	14'3" x 9'7"

< >	measuring points	ffzs	fridge freezer space
ws	washing machine space	ds	dishwasher space
h	hob	cup'd	cupboard
ovn	oven	b	boiler

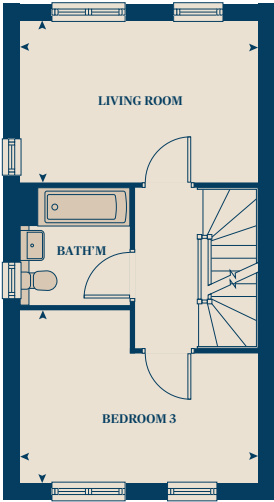
The Peregrine | 3 bedroom home

The floorplan has been produced for illustrative purposes only. Room sizes shown are between arrow points as indicated on plan. The dimensions have tolerances of + or -50mm and should not be used other than for general guidance. If specific dimensions are required, enquiries should be made to the sales consultant. The floor plans shown are not to scale. Measurements are based on the original drawings. Slight variations may occur during construction. The illustrations shown are computer generated impressions of how the property may look and are indicative only. External details or finishes may vary on individual plots and homes may be built in either detached or attached styles depending on the development layout. Exact specifications, window styles and whether a property is left or right-handed may differ from plot to plot. Please speak to our sales consultant for specific plot details.

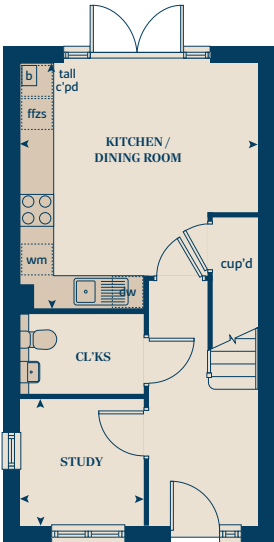
SECOND FLOOR



FIRST FLOOR



GROUND FLOOR





THE KINGFISHER

3 bedroom home

Open plan kitchen and dining room

Utility Room

Separate sitting room

Three well-proportioned bedrooms

Ensuite to bedroom 1


Bovis Homes
Est. 1885

THE KINGFISHER

3 bedroom home



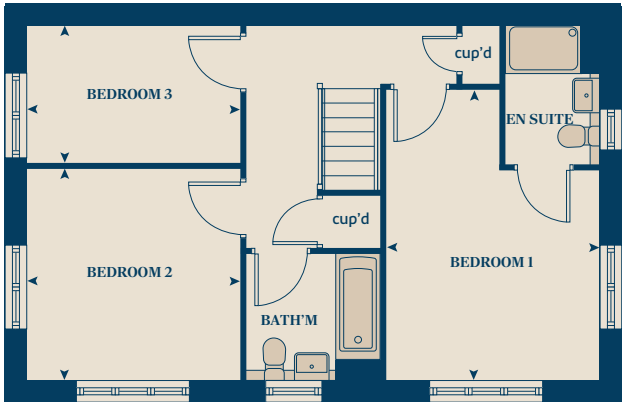
GROUND FLOOR	METRES	FEET/INCHES
Kitchen / dining room	5.68 x 3.37m	18'6" x 11'0"
Living room	5.68 x 3.10m	18'6" x 10'2"

FIRST FLOOR	METRES	FEET/INCHES
Bedroom 1	4.62 x 3.40m	15'2" x 11'2"
Bedroom 2	3.42 x 3.36m	11'2" x 11'0"
Bedroom 3	3.42 x 2.22m	11'2" x 7'3"

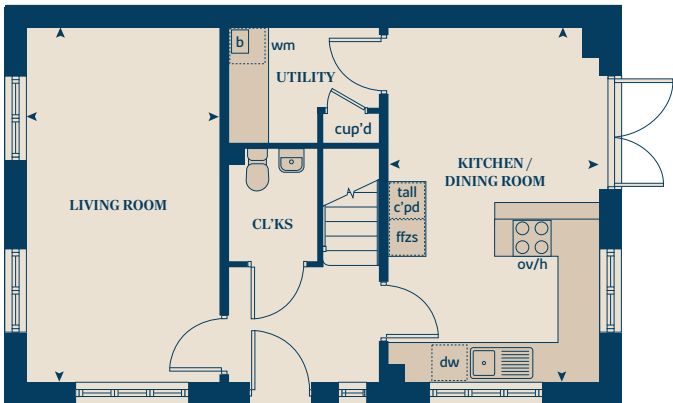
< >	measuring points	ffzs	fridge freezer space
ws	washing machine space	ds	dishwasher space
h	hob	cup'd	cupboard
ovn	oven	b	boiler

The Kingfisher | 3 bedroom home
The floorplan has been produced for illustrative purposes only. Room sizes shown are between arrow points as indicated on plan. The dimensions have tolerances of + or -50mm and should not be used other than for general guidance. If specific dimensions are required, enquiries should be made to the sales consultant. The floor plans shown are not to scale. Measurements are based on the original drawings. Slight variations may occur during construction. The illustrations shown are computer generated impressions of how the property may look and are indicative only. External details or finishes may vary on individual plots and homes may be built in either detached or attached styles depending on the development layout. Exact specifications, window styles and whether a property is left or right-handed may differ from plot to plot. Please speak to our sales consultant for specific plot details.

FIRST FLOOR



GROUND FLOOR





THE KITTIWAKE

3 bedroom home

Open plan kitchen and dining room with doors to the garden

Separate sitting room with doors to garden

Utility room

Three well proportioned bedrooms

En suite to bedroom 1

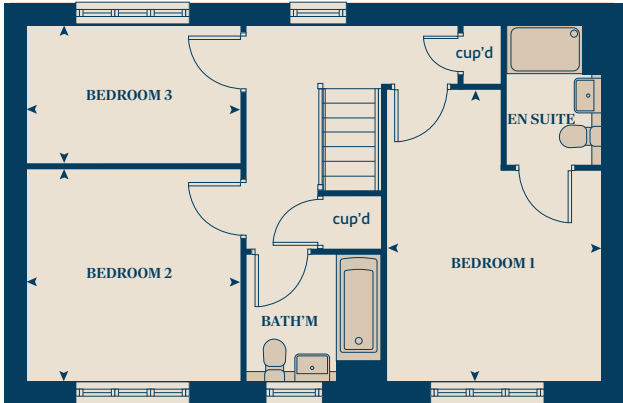

Bovis Homes
Est. 1885

THE KITTIWAKE

3 bedroom home



FIRST FLOOR



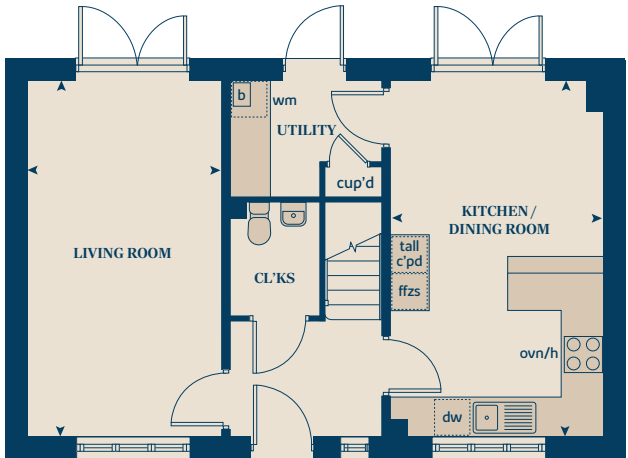
GROUND FLOOR	METRES	FEET/INCHES
Kitchen / dining room	5.68 x 3.37m	18'6" x 11'1"
Living room	5.68 x 3.10m	18'6" x 10'2"

FIRST FLOOR	METRES	FEET/INCHES
Bedroom 1	4.62 x 3.42m	15'2" x 11'2"
Bedroom 2	3.42 x 3.36m	11'2" x 11'0"
Bedroom 3	3.42 x 2.27m	11'2" x 7'4"

< >	measuring points	ffzs	fridge freezer space
ws	washing machine space	ds	dishwasher space
h	hob	cup'd	cupboard
ovn	oven	b	boiler

The Kittiwake | 3 bedroom home
The floorplan has been produced for illustrative purposes only. Room sizes shown are between arrow points as indicated on plan. The dimensions have tolerances of + or -50mm and should not be used other than for general guidance. If specific dimensions are required, enquiries should be made to the sales consultant. The floor plans shown are not to scale. Measurements are based on the original drawings. Slight variations may occur during construction. The illustrations shown are computer generated impressions of how the property may look and are indicative only. External details or finishes may vary on individual plots and homes may be built in either detached or attached styles depending on the development layout. Exact specifications, window styles and whether a property is left or right-handed may differ from plot to plot. Please speak to our sales consultant for specific plot details.

GROUND FLOOR





THE GUILLEMOT

2 bedroom home

Open plan kitchen/ Living/ Dining room

Ensuite to bedroom 1

Modern Bathroom

Ample storage

Garage

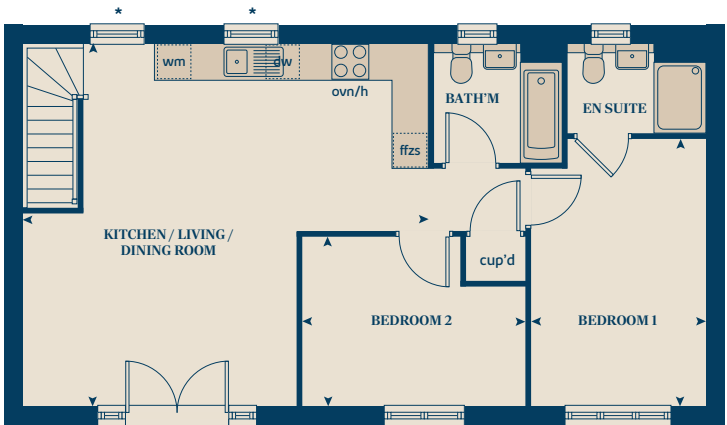

Bovis Homes
Est. 1885

THE GUILLEMOT

2 bedroom home



FIRST FLOOR



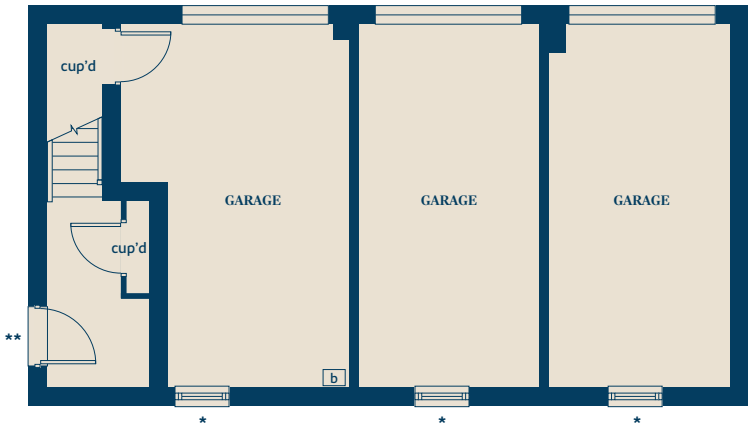
FIRST FLOOR	METRES	FEET/INCHES
Kitchen / living / dining room	5.79 x 6.08m	18'10" x 19'9"
Bedroom 1	4.49 x 2.92m	14'7" x 9'6"
Bedroom 2	3.75 x 2.84m	12'3" x 9'3"

< >	measuring points	ffzs	fridge freezer space
ws	washing machine space	ds	dishwasher space
h	hob	cup'd	cupboard
ovn	oven	b	boiler

The Guillemot | 2 bedroom home
The floorplan has been produced for illustrative purposes only. Room sizes shown are between arrow points as indicated on plan. The dimensions have tolerances of + or -50mm and should not be used other than for general guidance. If specific dimensions are required, enquiries should be made to the sales consultant. The floor plans shown are not to scale. Measurements are based on the original drawings. Slight variations may occur during construction. The illustrations shown are computer generated impressions of how the property may look and are indicative only. External details or finishes may vary on individual plots and homes may be built in either detached or attached styles depending on the development layout. Exact specifications, window styles and whether a property is left or right-handed may differ from plot to plot. Please speak to our sales consultant for specific plot details.

- * Window variation to Plot 3000. Please speak to a sales consultant for further details.
- ** Door variation to Plot 3043. Please speak to a sales consultant for further details.

GROUND FLOOR





THE FULMAR

2 bedroom home

Open plan kitchen/ dining/ living room

Ground floor cloakroom

2 well proportioned bedrooms

Doors leading to the garden

ensuite to bedroom 1


Bovis Homes
Est. 1885

THE FULMAR

2 bedroom home



GROUND FLOOR	METRES	FEET/INCHES
Kitchen / living / dining room	9.05 x 4.48m	29'7" x 14'7"

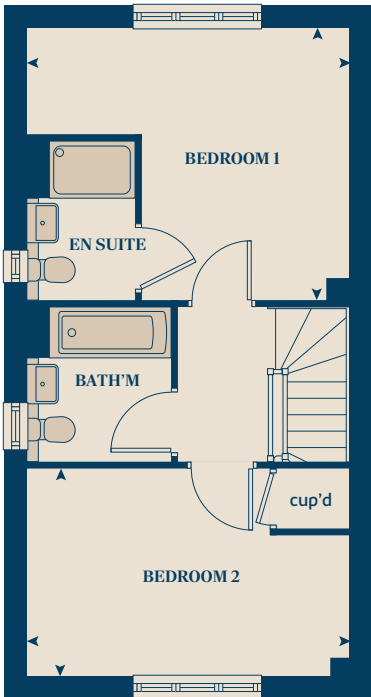
FIRST FLOOR	METRES	FEET/INCHES
Bedroom 1	4.48 x 3.78m	14'7" x 12'4"
Bedroom 2	4.48 x 2.90m	14'7" x 9'5"

< >	measuring points	fr	fridge space
ws	washing machine space	fz	freezer space
h	hob	ds	dishwasher space
ovn	oven	cup'd	cupboard
		b	boiler

The Fulmar | 2 bedroom home

The floorplan has been produced for illustrative purposes only. Room sizes shown are between arrow points as indicated on plan. The dimensions have tolerances of + or -50mm and should not be used other than for general guidance. If specific dimensions are required, enquiries should be made to the sales consultant. The floor plans shown are not to scale. Measurements are based on the original drawings. Slight variations may occur during construction. The illustrations shown are computer generated impressions of how the property may look and are indicative only. External details or finishes may vary on individual plots and homes may be built in either detached or attached styles depending on the development layout. Exact specifications, window styles and whether a property is left or right-handed may differ from plot to plot. Please speak to our sales consultant for specific plot details.

FIRST FLOOR



GROUND FLOOR

